

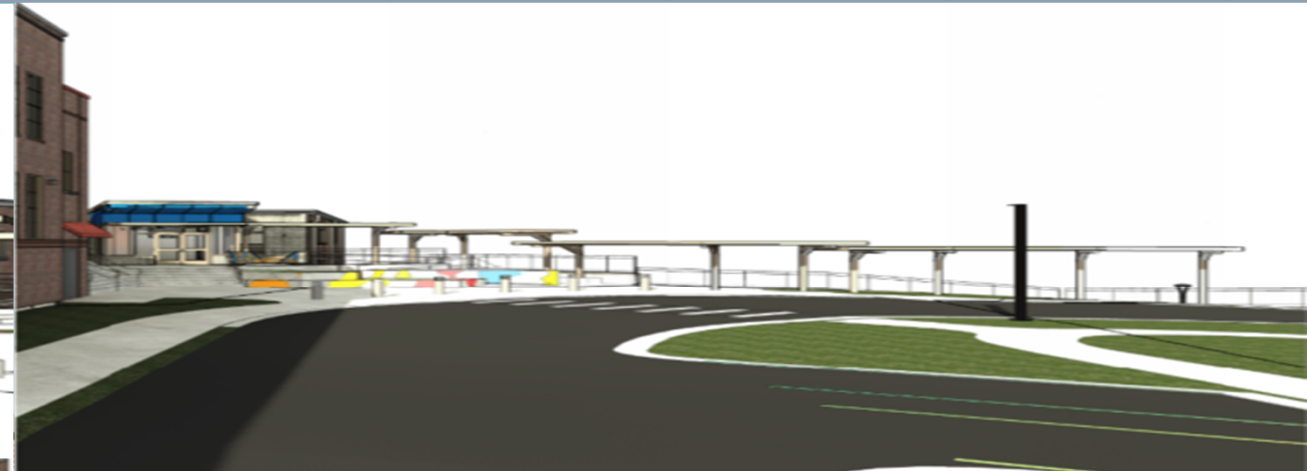
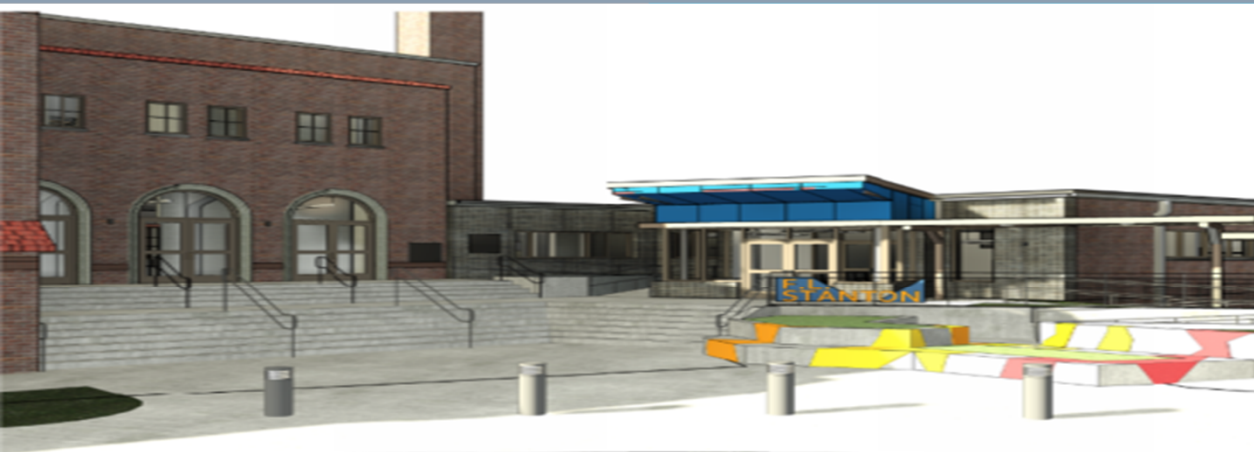
Riddle of the week: What goes up, but never comes down?

PLANNERS, BUILDERS, PARTNERS™

Answer: Age



Construction Progress Report F.L. Stanton Elementary School



Date: 11/10/2023

Activities Completed and Upcoming

This week:

- Continue to frame furring walls
- Begin installing a new sprinkler system on the upper level
- Louver framing is complete
- Install drains in the courtyard area
- Continue plumbing overhead rough-in
- Begin sewer and vent install

Next 2 Weeks:

- Complete overhead rough in the gym area
- Complete feeder install on the lower level
- Complete electrical overhead rough on levels 1 and 2
- Continue installing sprinkler system throughout
- Begin constructing pad for the new kitchen addition



Continue metal stud framing throughout



Continue exterior sheathing on the 1958 building



Continue framing Interior furring walls throughout



Metal stud framing in the gym



Continue duct install throughout on level 1



CMU Block is onsite